

JAPANESE GREEN TEA

SHIZUOKA GREEN TEA

This Azabu tea begins by building the soil of the tea plantation from scratch, using plenty of organic fertilizers such as fish meal, rapeseed meal, and rice hulls.

Efforts are made to adjust the mixture based on soil test results conducted for each tea plantation.

The new buds of tea trees nurtured by such organic fertilizers are carefully picked and taken to the raw leaf room of the factory, where the quality is rigorously checked by experienced tea judges and tea masters.

We also pay attention to the water used to steam the raw leaves and completely remove carcinogens and chlorine with a highly efficient filter. We manufacture deep-steamed tea with pure, clean steam without impurities.

Please enjoy such organic pesticide-free Azabu tea.



FAB.JAPAN INC.

1-5-27 Azabujuban, Minato-ku, Tokyo Okada Building 301

TEL : 03-5775-2653 / FAX : 03-5775-2652

info@fab-japan.co.jp

AZABUCHA
麻布茶



AZABUCHA (Azabu Tea)
JAPANESE GREEN TEA

EFFECTS AND BENEFITS OF JAPANESE TEA



Benefits of AZABUCHA From JAPAN

Benefits of AZABUCHA From JAPAN

In addition to the ingredients listed below, Japanese tea is rich in fluorine, which prevents tooth decay, and minerals such as manganese, copper, and zinc, which have antioxidant effects, as well as dietary fiber and coenzyme Q10.

The vitamin C contained in the tea is heat resistant, and can be ingested more efficiently than vegetables.

BIODEGRADABLE TEA BAG

WHAT IS SOYLON ?



It has been reported by an American chemical society that when hot water is poured into a tea bag made of plastic film, about 10 billion pieces of *microplastics are dispersed. This is why we at Azabu-cha have been searching for a safe and secure teabag and have come up with SOYLON.

* Microplastics: Plastics with a diameter of 5μ or less

BIODEGRADATION

Biodegradation means that organic chemicals are completely decomposed by microorganisms and returned to water and carbon dioxide.

CHARACTERISTICS

- Soylon is a fiber material made from starch. It is a new material that is friendly to humans and the earth because it completely returns to the soil.
1. it is made from plant starch through lactic acid fermentation and polymerization (polyester) processes. It is ideal for use in leaf tea bag filters because of its excellent water permeability with uniform openings.
 2. Under appropriate conditions, after hydrolysis, the product is decomposed by commensal organisms into water and carbon dioxide.
 3. When burned, it does not emit toxic gases like dioxin. Moreover, it produces less global warming gases like carbon dioxide than common petroleum-based plastics.
 4. The material polylactic acid has been reported to have bacteriostatic and anti-fungal properties.
 5. The material is made from renewable plant materials and contributes to the development of a sustainable society. For this reason, it has obtained the biodegradable biomass plastic mark [243]. In Europe and the U.S.A. It has also been certified that it can be converted into fertilizer in composting facilities.

CATECHIN

- Antioxidant action
- Suppresses elevated blood cholesterol
- Suppresses elevated blood pressure and blood sugar
- Anti-allergic
- Suppression of body fat accumulation
- Antibacterial and deodorant effects
- Prevention of bad breath and tooth decay

VITAMIN C

- Antioxidant effect
- Cancer prevention effect
- immuno-stimulatory action

CAFFEINE

- Prevents drowsiness
- Relieves fatigue
- Metabolism promotion

CHLOROPHYL

- Deodorant effect
- Cancer prevention effect
- Metabolism promotion

β - CAROTENE

- Antioxidant effect
- Cancer prevention effect
- immuno-stimulatory action

DIETARY FIBRE

- Prevention of constipation
- Prevention of cancer, light bar, and heart disease
- Liver function improvement

THEANINE

- Relaxation of mind and body
- Healing effect

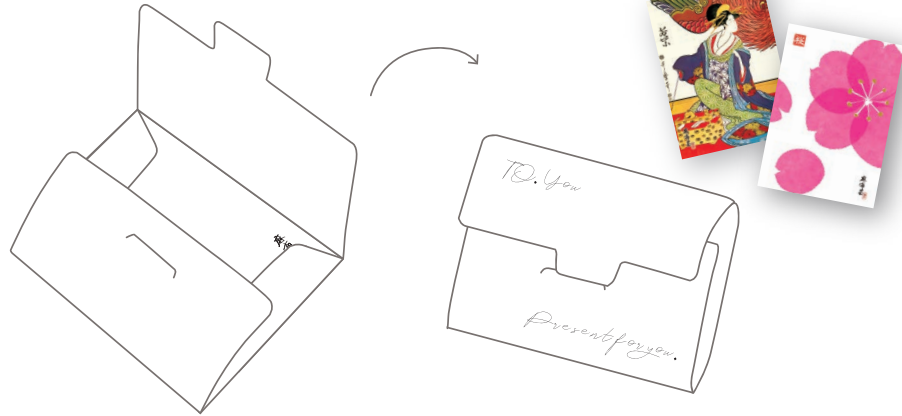
VITAMIN E

- Antioxidant action
- Cancer prevention effect

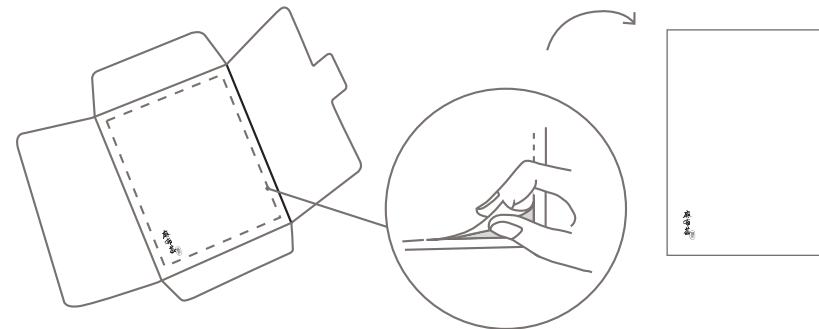
About the paper package

From the perspective of the SDGs, the packaging is designed to be reusable.

- Folded inside, it can be used as a gift with a message written on it.



- It can be used as a postcard by cutting it out with a cutout line.



NON VOC INK

What inks are people-friendly and environment-friendly?

VOC
FREE T&K

Non-VOC inks are inks in which petroleum solvents with high boiling point are replaced with vegetable oils to reduce their content to less than 1%.

Vegetable oils include soybean oil, linseed oil, paulownia oil, coconut oil, and rice bran oil. These environmentally friendly inks are more advanced than conventional vegetable oil inks. They are mainly used in offset printing.

The reduction of VOC components in the ink improves the working environment in the printing process and reduces air pollution.

U-2 MIKAERI



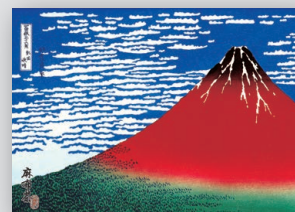
U-4 CHOU



U-6 OKEFUJI



U-8 AKAFUJI



U-10 KAMINARIFUJI



U-3 OIRAN



U-5 KABUKI



U-7 NIHONBASHI



U-9 NAMIFUJI



U-1 POPPIN



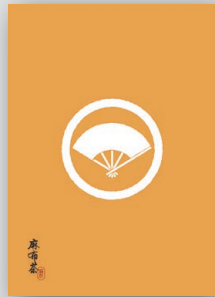
Product name AZBC-01

Organic Matcha “Ukiyo-e”

Themed on Bijin-ga (beautiful women paintings) and Mt. Fuji, which were particularly popular in the Edo period.

Packaging size : 115 × 160mm
Content : Matcha 2g × 5 sticks

U-1 POPPIN	KITAGAWA UTAMARO 喜多川歌麿 作『婦女人相十品 ポップインを吹く娘』
U-2 MIKAERI	HISIKAWA MORONOBU 菱川師宣 作『見返り美人図』
U-3 OIRAN	KITAGAWA UTAMARO 喜多川歌麿 作『鳳凰・松葉楼若紫』
U-4 CHOU	KITAGAWA UTAMARO 喜多川歌麿 作『吉原俄 荻江松蔵・いと・峰』
U-5 KABUKI	UTAGAWA KUNISADA 歌川国貞 作『石川五右衛門 市川海老蔵』
U-6 OKEFUJI	KATSUSHIKA HOKUSAI 葛飾北斎 作『富嶽三十六景尾州不二見原』
U-7 NIHONBASHI	UTAGAWA HIROSHIGE 歌川広重 作『東海道五十三次乃内 日本橋 朝之景』
U-8 AKAFUJI	KATSUSHIKA HOKUSAI 葛飾北斎 作『富嶽三十六景 凱風快晴』
U-9 NAMIFUJI	KATSUSHIKA HOKUSAI 葛飾北斎 作『富嶽三十六景 神奈川沖浪裏』
U-10 KAMINARIFUJI	KATSUSHIKA HOKUSAI 葛飾北斎 作『富嶽三十六景 山下白雨』



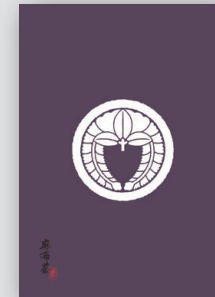
K-2 KOGANE



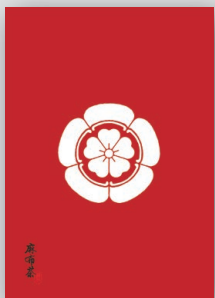
K-3 TOKIWA



K-4 HISUI



K-5 EDMURASAKI



K-1 BENI



Product name AZBC-01

Organic Matcha “Kamon”

“Kamon” is a symbol mark shared by family members and relatives. It is said that in the Heian period, nobles used these emblems instead of names on their belongings to indicate ownership. We have created an artwork with a background in traditional Japanese colors to make it look more majestic.

Packaging size : 115 × 160mm

Content : Matcha 2g × 5 sticks

K-1 BENI This artwork features a background in crimson color, with the Kamon “Gouri ni Sakura” (Five Gourd with Cherry Blossom), representing the cherry blossom, which has long been regarded as a symbol of flowers in Japan and is one of the national flowers.

K-2 KOGANE This artwork features a background in golden color, with the Kamon “Maru ni Gohon Bone Ougi” (Circle with Five Feathered Fans). The fan symbolizes good fortune, protection and has been cherished for its various meanings.

K-3 TOKIWA This artwork features a background in Tokiwa green color, with the Kamon “Mitsumatsu” (Three Pine Trees). The pine tree, which retains its green leaves throughout the year, is a symbol of longevity.

K-4 HISUI This artwork features a background in jade green color, with the Kamon “Naka Wa Ni Chigai Taka No Hane” (Difference in the Middle with Hawk Feathers). The hawk feather pattern was widely used as a martial emblem by samurais.

K-5 EDMURASAKI This artwork features a background in Edo purple color, with the Kamon “Maru Ni Sagari Fuji” (Circle with Descending Wisteria). Wisteria is an auspicious plant known for its long lifespan and strong reproductive power. It was used by samurais who achieved great glory.



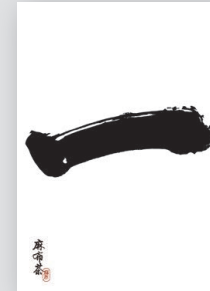
J-2 MARU



J-3 WARAI



J-4 HANA



J-5 ICHI



J-1 ZEN



Product name AZBC-01

Organic Matcha “Sho”

We have expressed the art of calligraphy, which is one of the Japanese cultures.

Packaging size : 115 × 160mm
Content : Matcha 2g × 5 sticks

J-1 ZEN	Zen is another name for the mind, representing a state of freedom and flexibility.
J-2 MARU	A symbol representing harmony and goodness.
J-3 WARAI	A kanji character that represents laughter and joy, bringing a smile to one's face.
J-4 HANA	A kanji character representing brilliance and elegance.
J-5 ICHI	A kanji character representing beginnings and firsts.



KL-2 NEKO



KL-3 SHOGATSU



KL-4 NARA



KL-5 SYONAGON



KL-1 TORII



Product name AZBC-01

Organic Matcha “Karuta”

Karuta is a game that uses cards with written text and cards with drawings. We have designed it based on Japanese landscapes and events.

Packaging size : 115 × 160mm

Content : Matcha 2g × 5 sticks

KL-1 TORII

Torii gates are dedicated by people as a symbol of gratitude, representing wishes coming true.

They have become a common sight since the Edo period.

KL-2 NEKO

“Maneki-neko” is a beckoning cat that protects the lord from thunderstorms and invites good fortune.

Many beckoning cats can be seen at Goutokuji Temple.

KL-3 SHOGATSU

In Japan, during the New Year, people decorate their homes with gate pine decorations and rice cakes to celebrate the new year.

This artwork depicts such scenes of New Year's.

KL-4 NARA

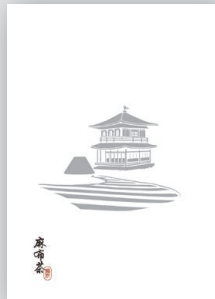
There is a legend that gods came riding on white deers.

Mentions of those deers can be found in the Manyoshu anthology (750 AD).

This artwork depicts messengers of the gods.

KL-5 SYONAGON

Sei Shonagon was born around 966 and was a talented woman known for her wit. Her works, including waka poetry and essays, remain to this day.



H-2 GINKAKU



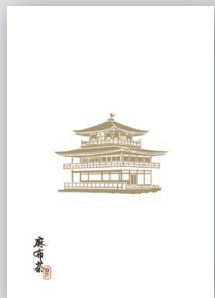
H-3 TSURU



H-4 DARUMA



H-5 SUMOU



H-1 KINKAKU



Product name AZBC-01

Organic Matcha “Haku”

We have expressed Japanese culture such as Kinkaku-ji Temple, Ginkaku-ji Temple, and Sumo with a gold foil-like print.

Packaging size : 115 × 160mm

Content : Matcha 2g × 5 sticks

H-1 KINKAKU	The reliquary hall of Rokuon-ji Temple, commonly known as “Kinkaku-ji Temple”.
H-2 GINKAKU	Jisho-ji Temple. It has been called “Ginkaku-ji Temple” in contrast to Kinkaku-ji Temple since the Edo period.
H-3 TSURU	The classic origami crane is illustrated in foil.
H-4 DARUMA	Daruma, known for immediately getting back up when knocked down, is considered a symbol of good luck.
H-5 SUMOU	Sumo, Japan's national sport, is illustrated in foil.

Product name AZBC-02

Organic Sencha “Mizuhiki”

“Shugi-bukuro” is one of the cultural traditions in Japan that conveys heartfelt emotions is the use of celebratory envelopes.

Packaging size : 115 × 160 mm

Content : Sencha 3g × 5 bags



M-1 OMEDETO



M-2 ARIGATO



M-3 KOKORO



M-1 OMEDETO The design features mizuhiki in the shape of an unbreakable knot, symbolizing the unending celebration.

M-2 ARIGATO A variation of the plum knot design. Plum blossoms bloom before spring and symbolize improvement of destiny, making them a popular lucky symbol.

M-3 KOKORO This butterfly knot can be tied and untied multiple times, making it suitable for repeated celebrations and expressions of gratitude.

Product name AZBC-02

Organic Sencha “Map”

Illustrations of attractions and names in Tokyo and Osaka.
How about combining Azabu tea with sightseeing?

Packaging size : 115 × 160 mm

Content : Sencha 3g × 5 bags



C-1 TOKYO



C-2 OSAKA



C-1 TOKYO Inspired by a map that includes major tourist spots in Tokyo, the artwork beautifully arranges the traditional icon, cherry blossoms.

C-2 OSAKA Osaka, known as the “Kitchen of Japan” during the Edo period, was the center of commerce. Like the Tokyo map, this artwork is inspired by a map illustration.





F-2 TENPURA



F-3 WAGASHI



F-4 RAMEN



F-5 SUSHI



F-1 ONIGIRI



Product name AZBC-02

Organic Sencha “Japanese Food”

Popular Japanese foods are depicted in a pop illustration. These food illustrations also go well with Azabu tea.

Packaging size : 115 × 160 mm

Content : Sencha 3g × 5 bags

F-1 ONIGIRI A staple food in Japan where rice is wrapped in nori seaweed with various fillings.

F-2 TENPURA Tempura is a popular deep-fried dish in Japan. Ebi tempura (shrimp tempura) is particularly famous.

F-3 WAGASHI Traditional Japanese sweets made with plant-based ingredients such as rice, wheat, and beans. They can evoke the feeling of each season through their appearance and taste.

F-4 RAMEN A popular food loved by both domestic and international visitors due to its wide variety of styles.

F-5 SUSHI A popular dish both in Japan and abroad, which combines vinegared rice with raw fish or other toppings.

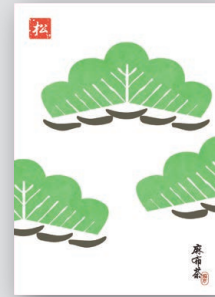




W-2 DARUMA



W-3 KIKU



W-4 MATSU



W-5 SAKURA



W-1 FUJISAN



Product name AZBC-02

Organic Sencha “Washi Chigiri-e”

Inspired by traditional Japanese Washi paper and Chigiri-e artwork.

This series captures the transparency of Washi paper and the texture of torn paper art.

Packaging size : 115 × 160 mm

Content : Sencha 3g × 5 bags

W-1 FUJISAN This artwork incorporates the auspicious symbols of Mount Fuji and Kasumi (layered clouds) in vibrant colors, giving it a modern touch while retaining the traditional icon.

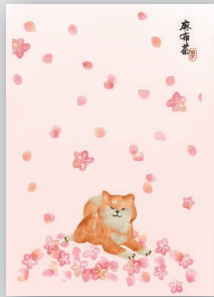
W-2 DARUMA In Japan, it is popular to draw eyes on a Daruma doll when making a wish. This artwork carries the wish for your wishes to come true.

W-3 KIKU The chrysanthemum has long been considered a special flower in Japan, symbolizing dignity and grace. The design depicts layers of petals in a torn paper art style, expressing a realistic luster.

W-4 MATSU The pine tree symbolizes longevity and is highly respected in Japan. The use of a refreshing matcha green color creates a friendly and modern expression.

W-5 SAKURA This artwork vividly portrays the “SOMEIYOSHINO” cherry blossom variety, which is the most famous cherry blossom in Japan. By expressing the transparency of Washi paper, it evokes the fleeting beauty of cherry blossoms and reminds us of the beautiful spring in Japan.





S-2 HARU
(SPRING)



S-3 NATSU
(SUMMER)



S-4 AKI
(AUTUMN)



S-5 SHOGATSU
(NEW YEAR)



S-1 FUYU
(WINTER)

Product name AZBC-02

Organic Sencha “Four Seasons”

Japan is a country with distinct four seasons - spring, summer, autumn, and winter.

Each season offers beautiful landscapes to enjoy. This package showcases the beauty of Japan's four seasons along with adorable illustrations of native Japanese animals.

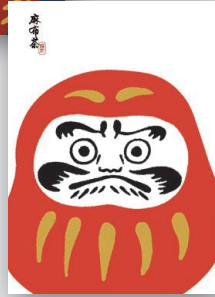
Packaging size : 115 × 160 mm

Content : Sencha 3g × 5 bags

- S-1 FUYU Features illustrations of yuzu, snowy landscapes, and Japanese macaques enjoying an open-air hot spring, which is a unique sight in Japan.
- S-2 HARU Depicts the breathtaking scenery of cherry blossoms in full bloom, with the popular Shiba Inu breed of dog in an artistic and dramatic scene.
- S-3 NATSU Showcases fireworks festivals, a beloved summer tradition in Japan, along with Japanese traditional foods and bears (Tsukinowaguma) enjoying the fireworks and festivities.
- S-4 AKI Illustrates calico cats, a native breed of cats in Japan, peacefully sleeping on a bed of fallen leaves during the beautiful autumn season, known as “fallen leaf futon”.
- S-5 SHOGATSU A vibrant artwork with cranes, symbolizing longevity, harmony, and prosperity, boldly arranged. Camellias, which are believed to have originated in Japan and bloom gracefully even in the harsh winter, symbolize endurance and vitality. The red and white color combination, representing Japan's national flag, has long been considered auspicious and is used in celebratory events. This artwork is perfect for the New Year, filled with auspicious symbols.

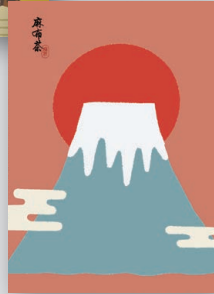
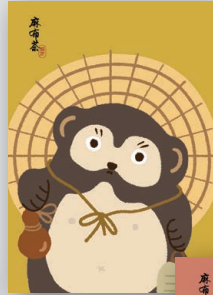


E-2 TAI



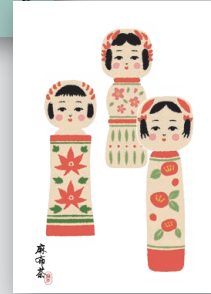
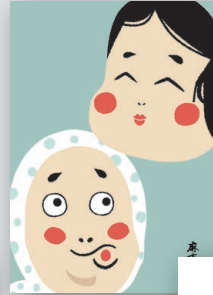
E-3 DARUMA

E-4 TANUKI



E-5 FUJI

E-6 OKAME&HYOTTOKO



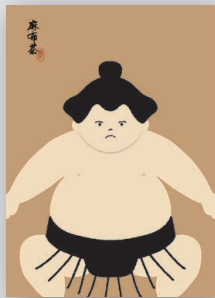
E-7 KOKESHI

E-8 MAIKO



E-9 NINJYA

E-10 SHISHIMAI



E-1 SUMOU



Product name AZBC-02

Organic Sencha “Lucky Charms”

This series features cute illustrations of traditional Japanese elements such as sunrise, Mount Fuji, and Daruma dolls, which are considered lucky and auspicious.

Packaging size : 115 × 160 mm

Content : Sencha 3g × 5 bags

E-1 SUMOU

Depicts the ritual of strong men offering their strength and prayers for peace, prosperity, abundant harvest, and bountiful catch.

E-2 TAI

Iconic food for festive occasions.

It combines the words Medetai (congratulations) and Tai (sea bream). The tai (sea bream) has long been considered a symbol of luck.

E-3 DARUMA

A lucky charm associated with safety, good health, and prayers for victory.

E-4 TANUKI

A lucky charm with the wish for more prosperity than other shops, symbolizing success in business.

E-5 FUJI

Mount Fuji symbolizes immortality and safety, making it a lucky charm associated with good health, longevity, and safety in the home.

E-6 OKAME&HYOTTOKO

Okame, a cheerful and plump woman, is believed to ward off misfortune. Hyottoko: A character blowing fire from a hearth, is considered a protector of fire or the god of hearths.

E-7 KOKESHI

A lucky charm associated with physical and mental recovery, abundant harvest, and mountain deities.

E-8 MAIKO

Originating from women in tea houses who served tea and dumplings to shrine visitors. Over time, they started performing dances and songs at tea houses.

E-9 NINJYA

Refers to practitioners of the unique Japanese martial art called Ninjutsu.

E-10 SHISHIMAI

A traditional folk dance performed by people wearing lion masks on festive and auspicious occasions.



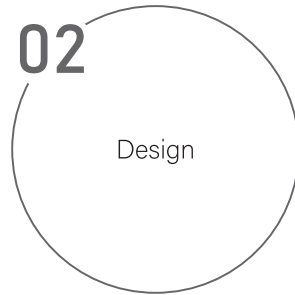
ODM/OEM

Original Design manufacturing / Original Equipment Manufacturing (Manufacturer)

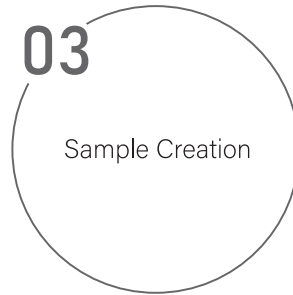
Total support from product planning proposals to delivery.
We will propose products tailored to your needs.



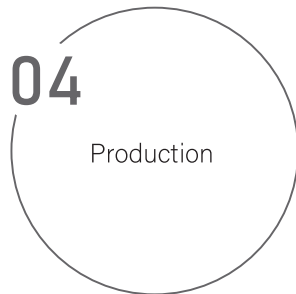
We plan internally, including design, materials, and shapes, and provide proposals through a planning document.



We offer a wide range of services, including conceptualizing the shape of the item, creating print patterns, and designing tags and labels.



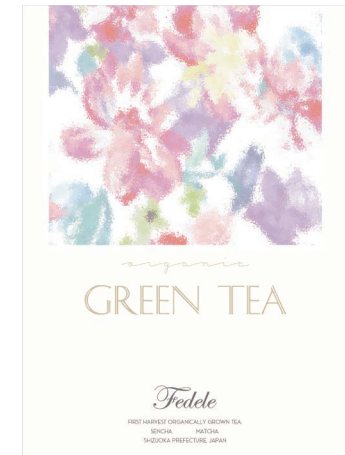
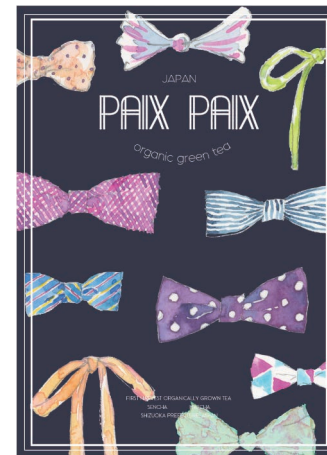
<Sample creation lead time: Approx.14 days.>
From the first sample to the final sample, we will proceed while carefully confirming the specifications.



<Production lead time : Approx. 60 days>
After receiving the purchase order, we will proceed with production. After production, we will conduct a full inspection of the entire quantity.



We will deliver the products to the warehouse specified by the customer.



We are here to listen to your requests and provide various design proposals and creations.

“Ukiyoe”



U-1 POPPIN U-2 MIKAERI U-3 OIRAN U-4 CHOU U-5 KABUKI



U-6 OKEFUJI U-7 NIHONBASHI U-8 AKAFUJI U-9 NAMIFUJI U-10 KAMINARIFUJI

“Kamon”



K-1 BENI K-2 KOGANE K-3 TOKIWA K-4 HISUI K-5 EDMURASAKI

“Sho”



J-1 ZEN J-2 MARU J-3 WARAI J-4 HANA J-5 ICHI

“Karuta”



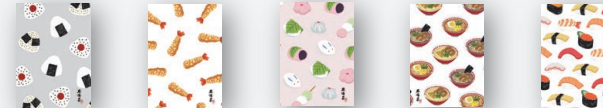
KL-1 TORII KL-2 NEKO KL-3 SHOGATSU KL-4 NARA KL-5 SYONAGON

“Haku”



H-1 KINKAKU H-2 GINKAKU H-3 TSURU H-4 DARUMA H-5 SUMOU

“Japanese Food”



F-1 ONIGIRI F-2 TENPURA F-3 WAGASHI F-4 RAMEN F-5 SUSHI

“Washi Chigiri-e”



W-1 FUJISAN W-2 DARUMA W-3 KIKU W-4 MATSU W-5 SAKURA

“Four Seasons”



S-1 FUYU S-2 HARU S-3 NATSU S-4 AKI S-5 SHOGATSU

“Lucky Charms”



E-1 SUMOU E-2 TAI E-3 DARUMA E-4 TANUKI E-5 FUJI



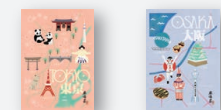
E-6 OKAME & HYOTTOKO E-7 KOKESHI E-8 MAIKO E-9 NINJA E-10 SHISHIMAI

“Mizuhiki”



M-1 OMEDETO M-2 ARIGATO M-3 KOKORO

“Chizu”



C-1 TOKYO C-2 OSAKA

AZBC-01 Organic Matcha

AZBC -02 Organic Sencha